



GMT MONTHLY MEMBERSHIP PROGRESS REPORT

Results as of: 5/31/2019

Multiple District 43

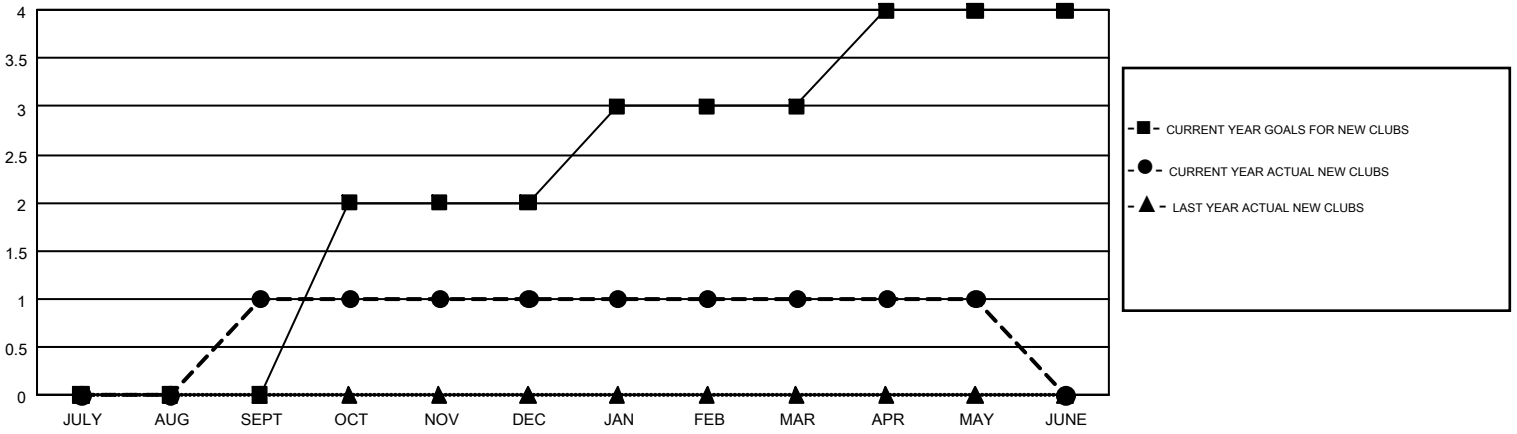
LOCATION: KENTUCKY

GMT: STEVE ANTON

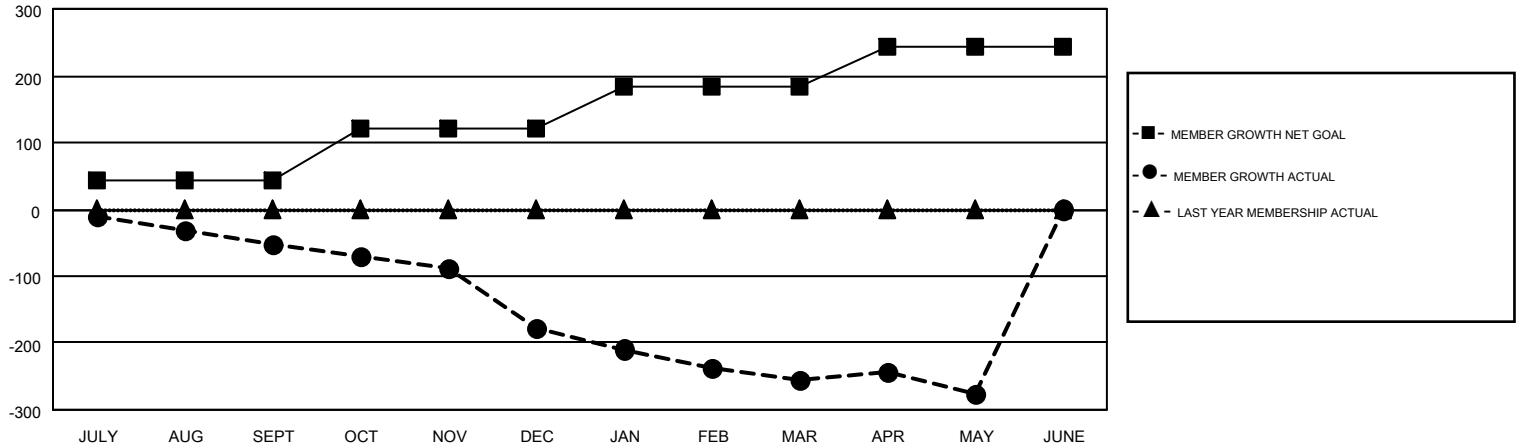
GMT CA 1

Clubs				Members			
RESULTS FOR 2018-2019				RESULTS FOR 2018-2019			
QUARTER	NEW CLUB GOAL	NEW CLUBS	DROPPED CLUBS	QUARTER	MEMBER GROWTH NET GOAL	MEMBER GROWTH ACTUAL	DROPPED MEMBERS ACTUAL (including transfers)
JULY/AUG/SEPT	0	1	2	JULY/AUG/SEPT	43	121	166
OCT/NOV/DEC	2	0	2	OCT/NOV/DEC	78	69	187
JAN/FEB/MAR	1	0	1	JAN/FEB/MAR	63	96	164
APR/MAY/JUNE	1	0	0	APR/MAY/JUNE	58	62	78

GOALS AND ACTUAL NEW CLUBS CUMULATIVE



GOALS AND ACTUAL MEMBERS CUMULATIVE



DROPPED CLUBS: 5	82 CLUBS OF 170 ADDED 1 OR MORE NEW MEMBERS	<u>GENDER DISTRIBUTION</u>	
<u>DROPPED MEMBERS</u>		MALE	2,817 (66.77%)
DECEASED	70	FEMALE	1,402 (33.23%)
CLUB CANCELLED	64	TOTAL FAMILY UNIT MEMBERS 907	
OTHER	461	FAMILY MEMBERS PAYING HALF DUES 466	
TOTAL	595		

[CLICK HERE FOR CUMULATIVE MEMBERSHIP DATA](#)